



Discoverer for AQS

From Version 9.0.4 to 10g R2

Bonnie Johnson
US EPA

Objectives for this session

- **Introduce version 10g R2 of Discoverer to current users**
 - ◆ Differences in setting up your Connection
 - ◆ Improved Ease of Use
 - ◆ Reporting enhancements
- **Demonstrate new features**
- **Describe the transition**

Oracle Business Intelligence Discoverer



It's a new name and a new look for
Discoverer via the web.

3

“Business Intelligence” instead of just Discoverer

What you need

- AQS userid and password
- Java-enabled Web browser
 - ◆ MS IE 5.5, 6.0 and higher
 - ◆ Netscape 7.1, 7.2
 - ◆ Mozilla 1.5 and higher
- JRE (or JInitiator)
- Admin privileges to install a Java Virtual Machine on your client PC (100-150 MB)
- About 50 MB available disk space for Oracle Jar Cache
- url: <http://www.epa.gov/ttn/airs/airsaqs>
or go directly to
<https://iasint.rtpnc.epa.gov/discoverer/plus>

4

Note: As of this date (11/15/06), MS IE 7 is not recommended.

Starting Discoverer Plus

<https://iasint.rtpnc.epa.gov/discoverer/plus>

ORACLE Discoverer Plus
Business Intelligence

Exit Help

Connect Directly

Connect to OracleBI Discoverer

To connect to OracleBI Discoverer, click on a connection name or enter your connection details directly.

Choose Connection

Create Connection

Details	Connection	Description	Update	Delete
Show	aqqa - 10g	staging area for upgrade to application server 10gR2. Only for aqqa		
Show	EIMS_PUBLIC	EIMS Public Connection		

Connect Directly

Enter your connection details below to connect directly to OracleBI Discoverer.

* Indicates required field.

Connect To: OracleBI Discoverer

* User Name:

* Password:

* Database:

End User Layer:

Locale: (Locale retrieved from browser)

Go

Exit | Help

Copyright (c)2000, 2005 Oracle Corporation. All rights reserved.
About OracleBI Discoverer Plus Version 10.1.2.4.6.10
Oracle Technology Network

5

You can always just type in the URL or use links from the aqs ttn page – Web Applications on the sidebar.

If you're behind the EPA firewall, you can use http instead of https.

Create a Connection, Apply & Connect

ORACLE Discoverer Plus
Business Intelligence

Create Connection
Use this page to enter the details of the connection that you wish to create. Choose a name that is easy to remember, followed by an optional description and locale. Enter the account details for this connection before proceeding.

Cancel Apply **Apply and Connect**

Connection Details
* Indicates required field.

Connect To: OracleBI Discoverer

* Name: apex

Description: for testing new Discoverer

Locale: Locale retrieved from browser

Account Details

* User Name: bos

* Password: *****

* Database: apex

TIP You will be prompted to select an End User Layer and/or an Applications Responsibility if more than one exists.

Cancel Apply **Apply and Connect**

Help

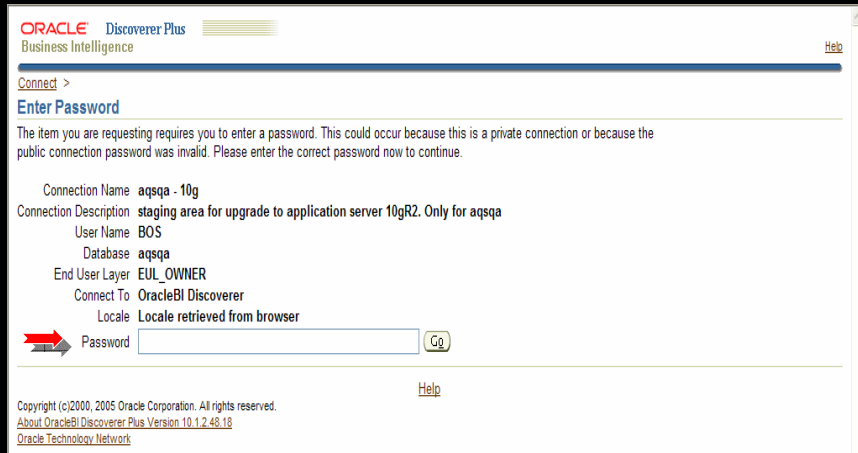
Copyright (c)2000, 2005 Oracle Corporation. All rights reserved.
About OracleBI Discoverer Plus Version 10.1.2.48.18
Oracle Technology Network

Done Trusted sites

6

Private Connection Details are stored in cookies, so if someone else uses your PC and the same browser, they will see your connection (but they'd still have to know your password to login.)

Enter Password



The screenshot shows the 'Enter Password' dialog box in Oracle Discoverer Plus. The window title is 'ORACLE Discoverer Plus Business Intelligence'. Below the title bar, there is a 'Connect >' button and a 'Help' link. The main heading is 'Enter Password'. A message states: 'The item you are requesting requires you to enter a password. This could occur because this is a private connection or because the public connection password was invalid. Please enter the correct password now to continue.' Below this, connection details are listed: Connection Name: aqsqa - 10g, Connection Description: staging area for upgrade to application server 10gR2. Only for aqsqa, User Name: BOS, Database: aqsqa, End User Layer: EUL_OWNER, Connect To: OracleBI Discoverer, and Locale: Locale retrieved from browser. At the bottom, there is a 'Password' label with a red arrow pointing to a text input field, followed by a 'Go' button. A 'Help' link is also present at the bottom right. The footer contains copyright information: 'Copyright (c)2000, 2005 Oracle Corporation. All rights reserved. About OracleBI Discoverer Plus Version 10.1.2.48.13 Oracle Technology Network'.


ORACLE Discoverer Plus Business Intelligence [Help](#)

[Connect >](#)

Enter Password

The item you are requesting requires you to enter a password. This could occur because this is a private connection or because the public connection password was invalid. Please enter the correct password now to continue.

Connection Name: aqsqa - 10g
Connection Description: staging area for upgrade to application server 10gR2. Only for aqsqa
User Name: BOS
Database: aqsqa
End User Layer: EUL_OWNER
Connect To: OracleBI Discoverer
Locale: Locale retrieved from browser

 Password [Go](#)

[Help](#)

Copyright (c)2000, 2005 Oracle Corporation. All rights reserved.
About OracleBI Discoverer Plus Version 10.1.2.48.13
Oracle Technology Network

First time set up

Depending on the software already installed on the client machine, you might have to download and install a Java Virtual Machine (JVM) (e.g. Java Plug-in).

If you have to download and install a JVM, the Security Warning dialog is displayed.



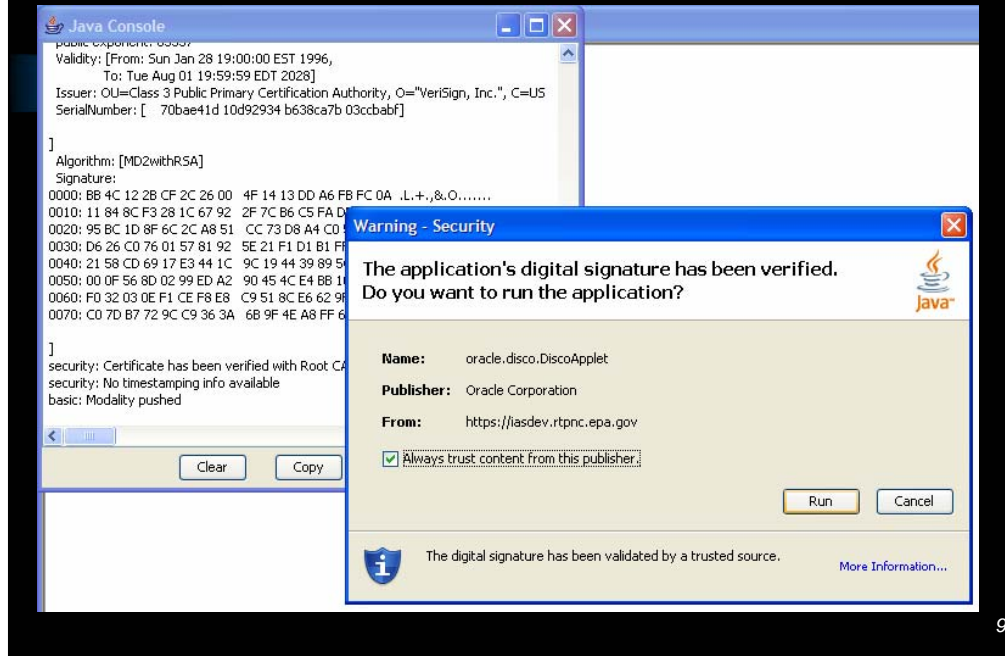
8

Hint: If the JVM installation process fails, close down extraneous processes on the client machine, then re-try.

If you can get connection working using JRE then the relatively manual process of updating the certificate is eliminated.

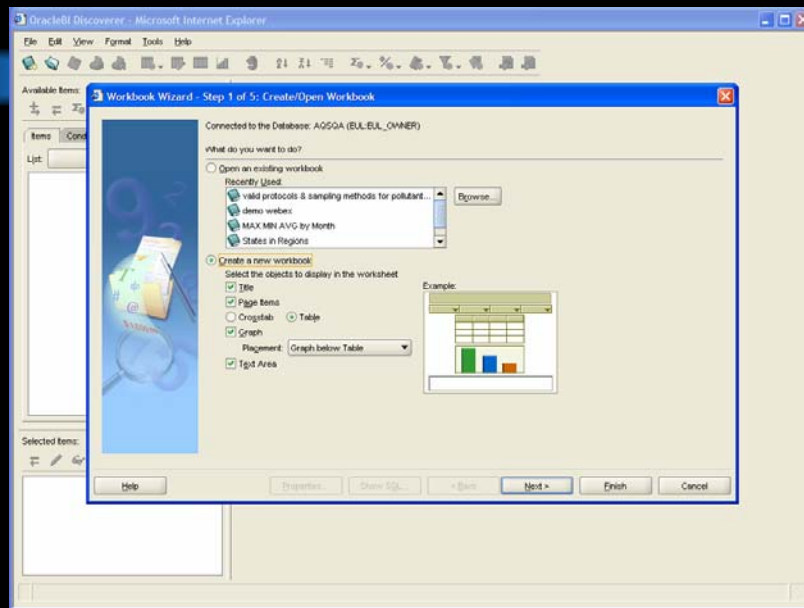
You may need to adjust your Internet Options (under Tools) to allow Browsing to “Enable Install On Demand” and “Use JRE 1.5.0_09 for <applet>”

First time, download applet



The Discoverer Plus applet provides the user interface and functionality for creating workbooks and analyzing data. The next time the user logs on, the applet runs from the local cache and does not need to be downloaded. (Of course, if you delete your cache, or move to another machine, you'll have to download it again.)

Workbook Wizard starts



10

Once the Workbook Wizard starts, you know you have successfully connected.
Only 5 steps in the Workbook Wizard now (instead of 10).

The simplest workflow is to use the essential steps:

- 1- Choose a worksheet type
- 2- Choose the items
- 3- Arrange the layout of the data
- 4- Define conditions
- 5- Finish

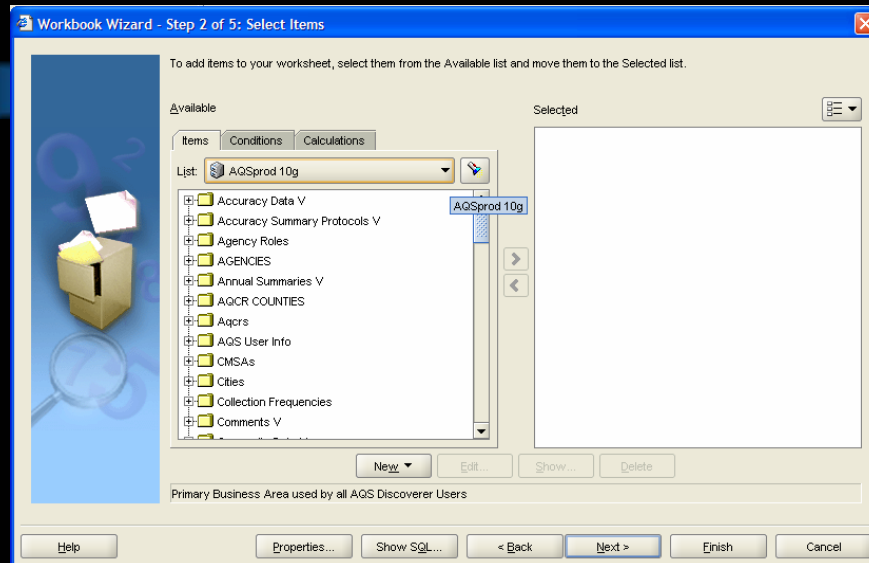
Step 1: choose whether to open an existing workbook or create a new one.

If creating a new workbook, then use the check boxes and radio buttons for the options that can be displayed.

For the simplest workbook, uncheck Title, Page Items, Graph, and Text Area. (You can change the defaults for Title and Text Area but not for Page Items, Crosstab, Table, and Graph.)

“Page Detail” worksheets consume a lot of memory. A “Table” is the most efficient type of worksheet.

Step 2 – select items

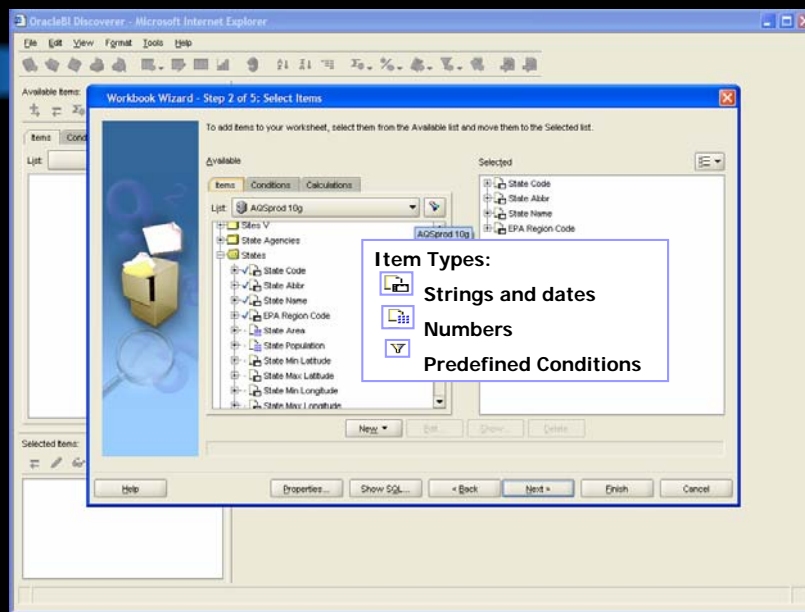


11

Step 2 window has 5 areas:

- 1) Selection box with heading “Available” that has 3 tabs (items, conditions, & calculations)
Under the Items tab, you choose from the list of available business areas. As with the previous version, you can click to highlight a folder or items and use the move button (>) to select. You can drag and drop folders/items in the Selected box. You can also right click on a folder or item and choose “add” from the pop-up menu.
- 2) Box with the heading “Selected” – where you put your choices. Here you can also highlight and move items back or right click and choose “remove” from the pop-up menu.
- 3) Views drop-down – right above the Selected box. You can choose to include the folder names with the items
- 4) 4 additional buttons: New, Edit, Show, Delete
New: to create new conditions, calculations, percentages, and totals
Edit: use to edit existing conditions, calculations, percentages, and totals
Show: to show details about predefined conditions
Delete: to delete a user-defined condition, calculation, percentage, or total
- 5) Find button – flashlight: Opens a Find dialog box

Step 2 – selected items



12

Selected items will have the check mark beside them in the “available” box.

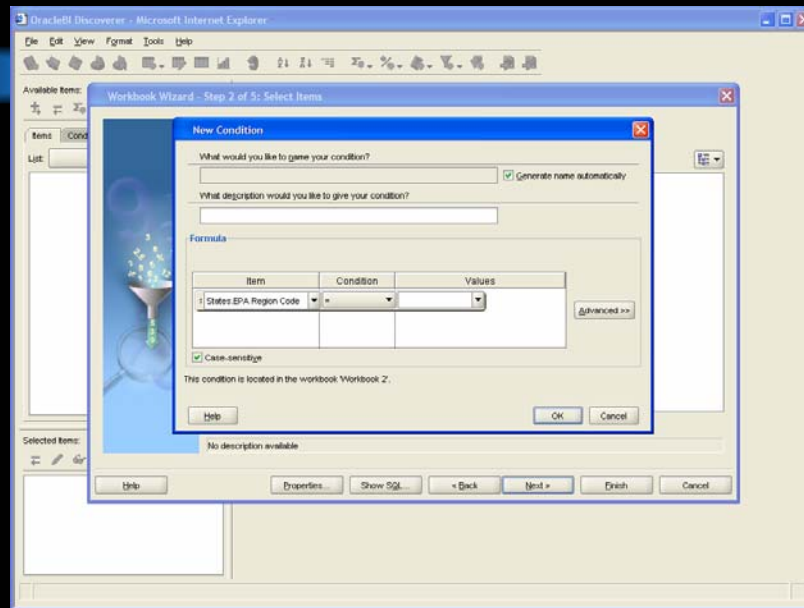
Item Types:

Strings and dates

Numbers

Predefined conditions

Conditions



New Condition

OracleBI Discoverer - Microsoft Internet Explorer

Workbook Wizard - Step 2 of 5: Select Items

Available Items

Items

List

Selected Items

No description available

Help

Properties...

Show SQL...

Back

Next >

Finish

Cancel

New Condition

What would you like to name your condition?

(EPA Region Code = 1047) ☒ Generate name automatically

What description would you like to give your condition?

Formula

Type text in single quotes or select a value from the drop-down list. Multiple values must be separated by commas.

Item	Condition	Values
States EPA Region Code	=	1047

☒ Case-sensitive

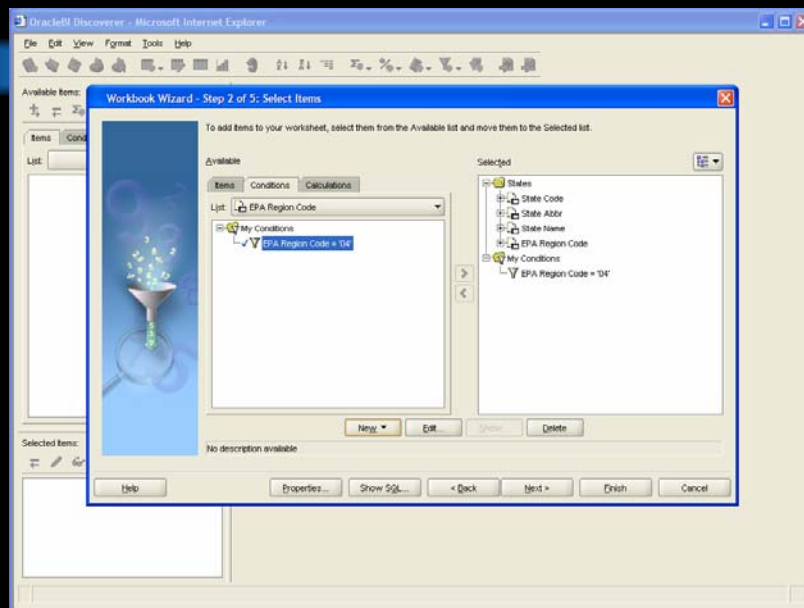
This condition is located in the workbook 'Workbook 2'.

Help

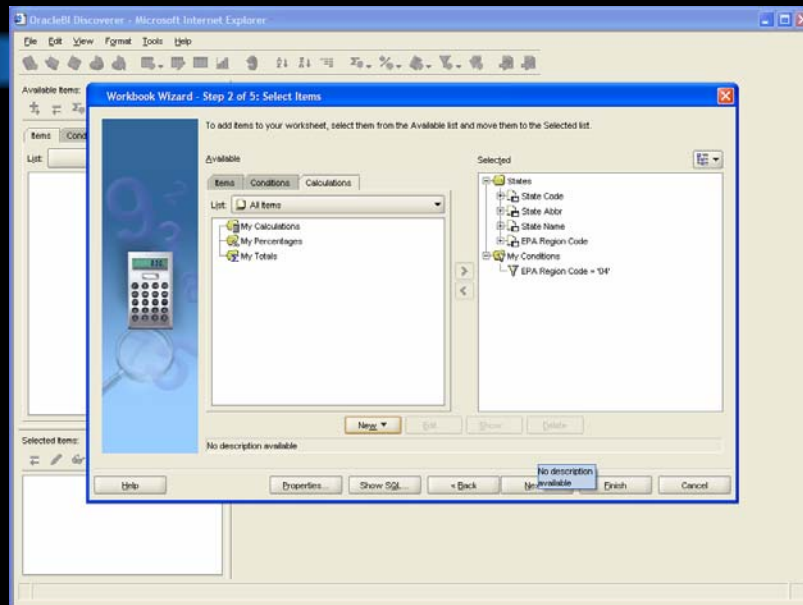
OK

Cancel

Conditions

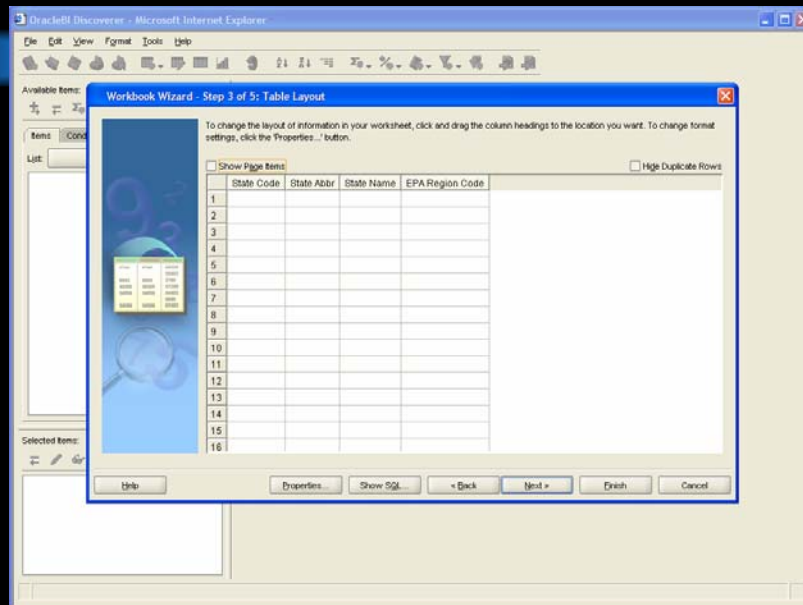


Conditions



16

Step 3 – Table Layout

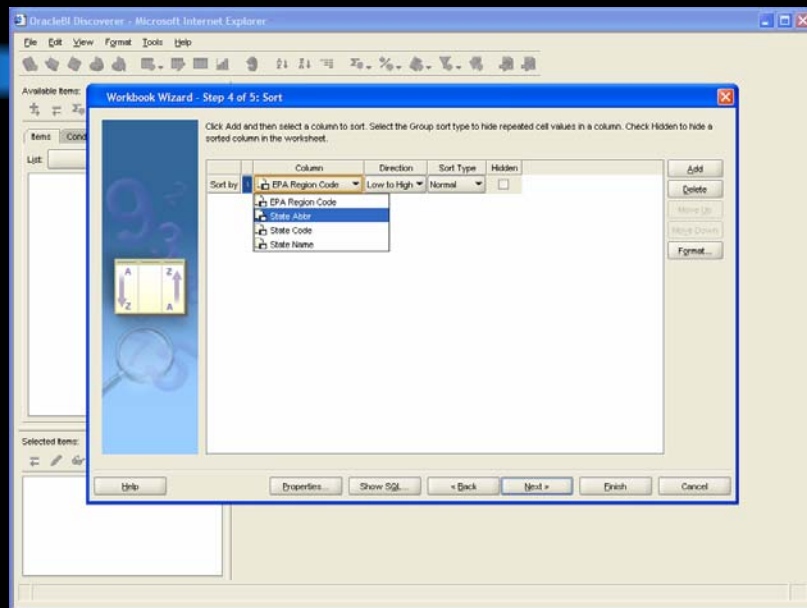


17

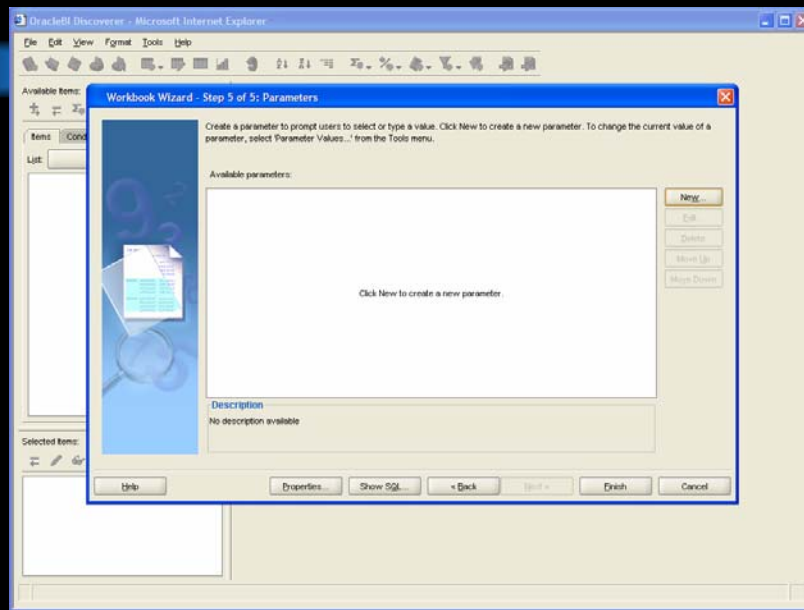
By default, Discoverer will display items in the order you selected them. Here you can change that order and it's easier than before. If you have a large number of columns, you don't have to drag it over as far as you can, then scroll over and drag it again.

You also get the chance to make 2 other choices: Page Items and Hide Duplicate Rows

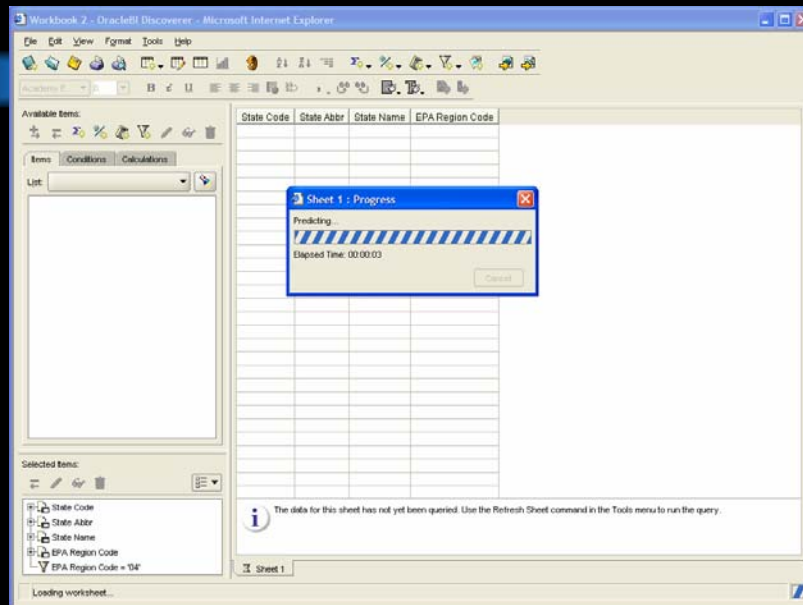
Step 4 - Sort



Step 5 - Parameters



Finish and run



20

Results

Workbook 2 - OracleBI Discoverer - Microsoft Internet Explorer

File Edit View Format Tools Help

Academy E...

Available Items:

Items Conditions Calculations

List: AGG basic 10g

Accuracy Summary Protocols V
AGENCIES
Annual Summaries V
Cities
Comments V
Counties
Daily Summaries V
EPA Regions
Exceptional Data Types
Monitor Accuracy Summaries V
Monitor Agency Rules V
Monitor Collection Periods V
Monitor Objectives V
Monitor Pollutant Areas V
Monitor Precision Summaries V

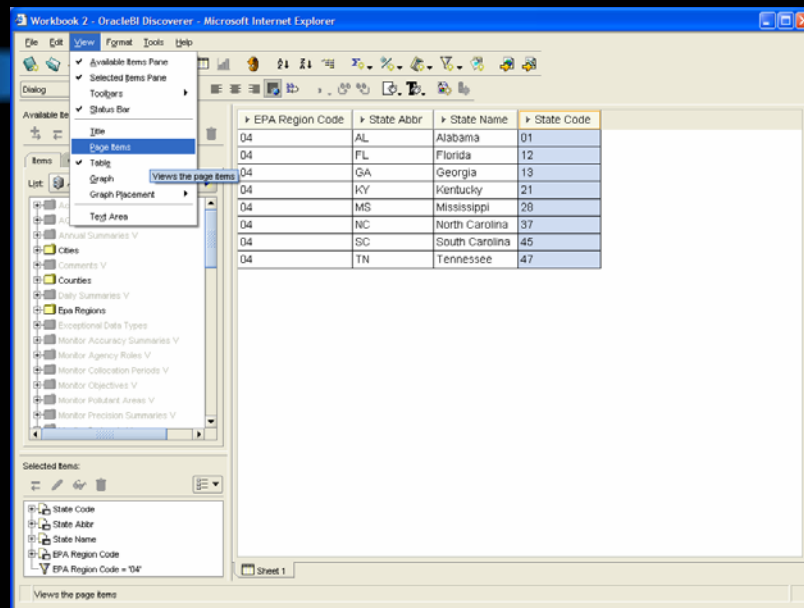
Selected Basic:

State Code
State Abbr
State Name
EPA Region Code
EPA Region Code = '04'

	State Code	State Abbr	State Name	EPA Region Code
01	AL	Alabama	04	
12	FL	Florida	04	
13	GA	Georgia	04	
21	KY	Kentucky	04	
28	MS	Mississippi	04	
37	NC	North Carolina	04	
45	SC	South Carolina	04	
47	TN	Tennessee	04	

Sheet 1

Change what shows on screen



22

Click on View and you can choose which panes show up on your screen. Here, adding the Page Items to the view.....

Using Page Item

The screenshot shows the OracleBI Discoverer interface within a Microsoft Internet Explorer browser window titled 'Workbook 2 - OracleBI Discoverer'. The interface includes a menu bar (File, Edit, View, Format, Tools, Help), a toolbar, and a 'Dialog' dropdown set to '11'. The main workspace is divided into several sections:

- Available Items:** A list of data items on the left, including 'AGS basic 10g', 'Accuracy Summary Protocols V', 'AGENCIES', 'Annual Summaries V', 'Cities', 'Comments V', 'Counties', 'Daily Summaries V', 'EPA Regions', 'Exceptional Data Types', 'Monitor Accuracy Summaries V', 'Monitor Agency Roles V', 'Monitor Collocation Periods V', 'Monitor Objectives V', 'Monitor Product Areas V', and 'Monitor Precision Summaries V'.
- Page Items:** A dropdown menu at the top right of the workspace, currently set to 'EPA Region Code: 04'.
- Table:** A table displaying data for EPA Regions, with columns for State Abbreviation, State Name, and State Code.
- Selected Items:** A list at the bottom left showing items that have been added to the page, including 'State Code', 'State Abbv', 'State Name', 'EPA Region Code', and 'EPA Region Code = 04'.

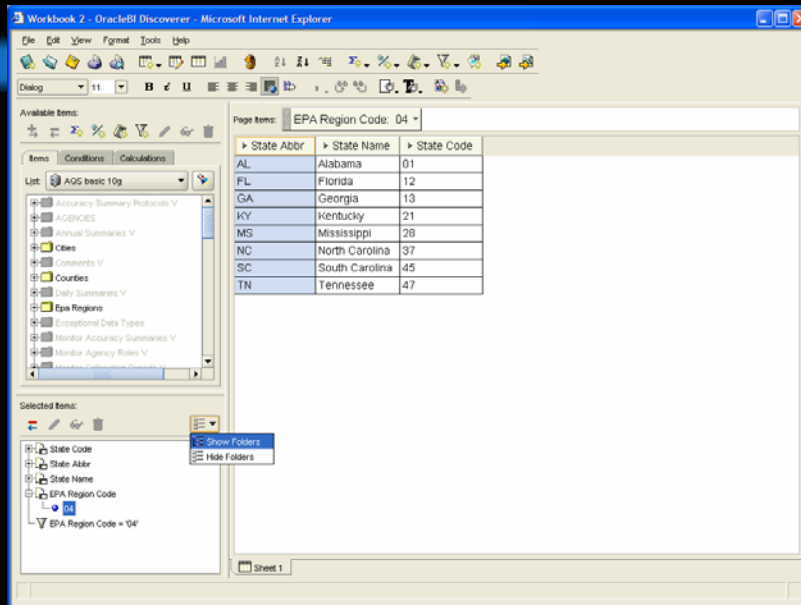
The table in the 'Page Items' section contains the following data:

State Abbv	State Name	State Code
AL	Alabama	01
FL	Florida	12
GA	Georgia	13
KY	Kentucky	21
MS	Mississippi	28
NC	North Carolina	37
SC	South Carolina	45
TN	Tennessee	47

23

Clicked on EPA Region Code and drag it up to Page Items

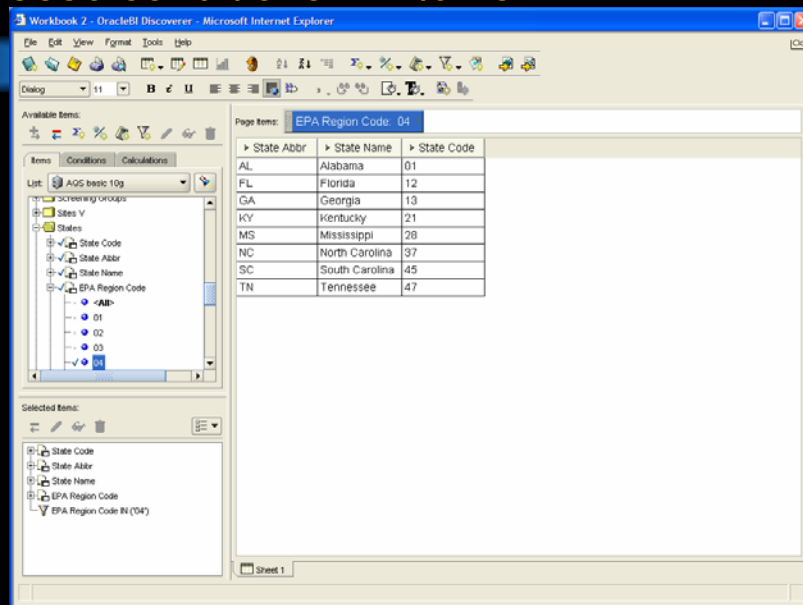
More options available while results are showing



24

The best part of this version is being able to make changes while your results are still visible.

Choose conditions in "Items"



25

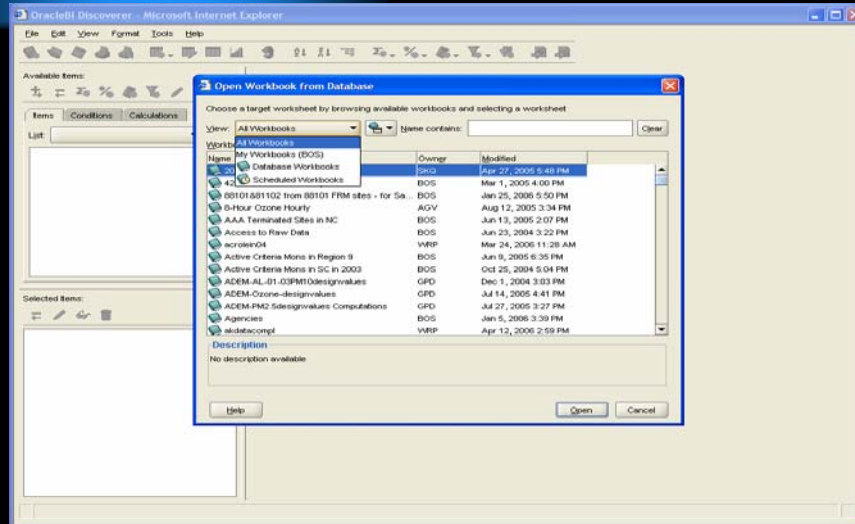
There are several ways to add conditions:

... in the available items (with an LOV)

... in the selected items (with an LOV)

... click on the Conditions tab and create or edit a condition as in previous version

Opening Existing Workbooks

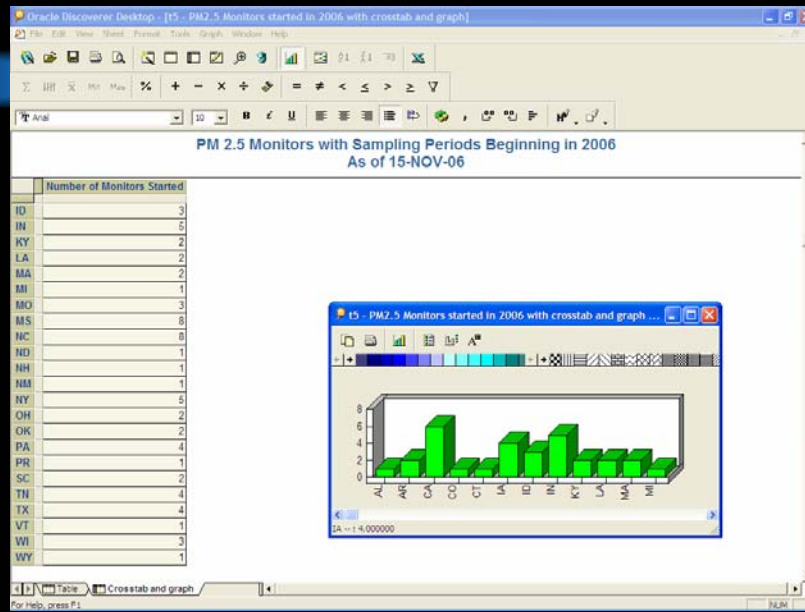


26

You can see a list of all workbooks available to your userid, All Workbooks, My Workbooks

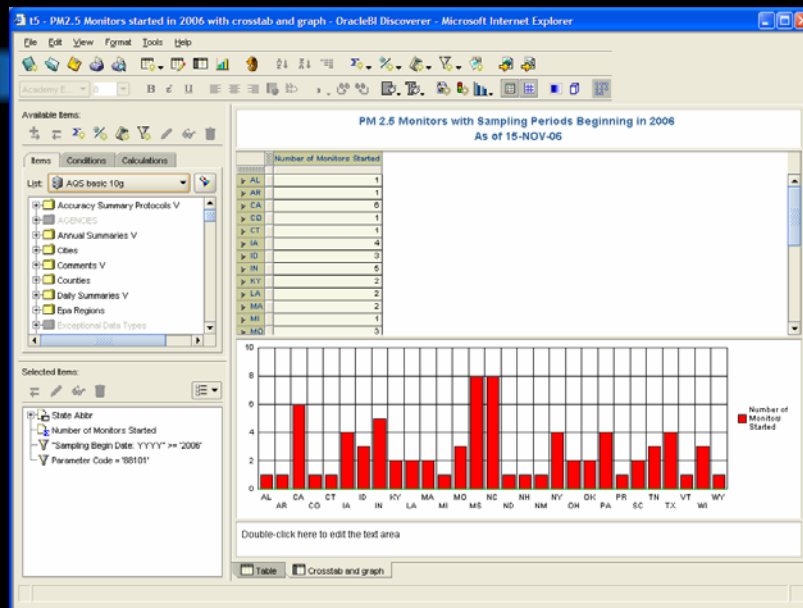
Nice feature that you can now see who created the workbook and when it was last modified.

Sample Report w/Graphs in "old" version



27

Sample Report w/Graphs in "new" version



28

Points Worth Remembering

- AQSprod is the database name (The name you need to set up your connection.)
- Your Discoverer userid/password are the same as your AQS application userid/password
- Only registered AQS users can access AQSprod via Discoverer
- Discoverer accesses the live production database (AQSprod – same as the AQS application)

- Your browser must allow downloads of signed Active X controls to install the JRE (Java Runtime Environment) from Sun. Hopefully, everyone will be able to use JRE and we won't have to bother with the certificate for the Jinitiator each year.
- MS Internet Explorer v 7 is NOT recommended at this time
- If you delete your cookies, you'll have to recreate your Connection
- If you switch PC's, you'll have to recreate your Connection

- The AQS basic business area has the most commonly used tables
- AQSprod includes all the tables in AQS basic plus Raw Data – Current and a few other related tables

- Use the link on the sidebar of the EPA TTN AQS page
<http://www.epa.gov/ttn/airs/airsaqs/> to get to AQS Discoverer Web and then save the direct url to your "favorites"
- You can find answers to some of the Frequently Questions from a link on that same page
- Many of the reference tables are viewable from
<http://www.epa.gov/ttn/airs/airsaqs/manuals/codedescs.htm>

Thanks for participating!

For assistance using Discoverer,

- Try the Online Help (It's pretty good!)
- Check the Discoverer Plus User Guide
- Contact the EPA Helpline
- Email johnson.bonnie@epa.gov or call Bonnie Johnson at 919 541-2469
- Call or email other EPA NADG staff (Jake Summers, Jon Miller, Chuck Isbell)
- Oracle Technology Network is a good source for information - free registration - look for Discoverer with Data Warehousing and Business Intelligence
(<http://www.oracle.com/technology/products/discoverer/index.html>)